

## Perennial Perfection

**Acanthus mollis 'White Water'** Zone 7. Stunning variegated white & green bold serrated leaves. Unique pink & cream flower stalk.

**Achillea** Zone 4:

• **'Pretty Woman'** 24" tall. Bright, non-fading pink.

• **'Peachy Seduction'** 12" tall. Compact basal branching & non-stop flowering. Peach tones.

• **'Laura'** 16" tall. New colour. Ruby red with white eyes. Unique.

• **'Little Suzie'** 16" tall. New colour: clear pink.

• **'Peggy Sue'** 16" tall. New colour: apricot-orange.

**Aconitum 'Royal Flush'** Zone 3. 4' tall. Deep purple flowers, red stems & early foliage in bronze. Turns green later.

**Antirrhinum 'Eternal'** Zone 7. First perennial snapdragon with variegated foliage & nice pink colouring.

**Arunco 'Misty Lace'** Zone 3. 30" tall. Compact variety with fern-like foliage, red stems & cream flowers.

**Astrantia 'Star of Billion'** Zone 4. 24" tall. Green & white flowers. Produces all summer.

**Bergenia 'Lunar Glow'** Zone 5. Yellow new foliage contrasts with rich green & burgundy leaves in winter. Pink blooms.

**Brunnera 'Dianne's Gold'** Zone 4.

Brilliant chartreuse-yellow foliage in the shade. Blue Forget-Me-Not-like flowers in spring. Holds foliage colour well.

**Campanula 'Viking'** Zone 3. 14" tall. Very floriferous blue with massive flowers May-July.

**Dianthus 'Scent First Series'** Zone 6. 12" tall. Continuous flowering and highly perfumed.

• **'Passion'** Deep red double blooms, deep blue foliage

• **'Candy Floss'** Double pink blooms, deep blue foliage

• **'Tickled Pink'** Semi-double lavender pink blooms, deep blue foliage

**Echinacea** Zone 4:

• **'Hot Papaya'** 32" tall. Deep non-fading orange flowers & petals. Wow!

• **'Little Angel'** 12" tall. Perfumed white flowers on very compact plant.

• **'Firebird'** Red-orange smaller flowers. Ideal to companion with coreopsis & rudbeckia.

• **'Maui Sunshine'** 32" tall. Large, sweetly perfumed bright yellow flowers. Nice with Eupatorium 'Chocolate'.

• **'Tomato Soup'** 32" tall. Best seller. Unique tomato soup colour. Vigorous.



*Achillea 'Pretty Woman'*  
Photo: ballhort.com



*Dianthus 'Candy Floss'*  
Photo: skagilgardens.com



*'Hot Papaya'*  
Photo: plantsnouveau.com

• **'Coral Reef'** 36" tall. Double anemone 4" dark coral blooms. Nice with actaeas.

**Eryngium:**

• **'Naughty Jackpot'** Zone 4. 14" tall.

White & cream margins on leaves. Light blue with silver green, pineapple shaped flowers. Strong stems.

• **'Tiny Jackpot'** Zone 4. 14" tall. Very compact. Ideal for containers. Long flowering.

• **'Sunny Jackpot'** Zone 3. 32" tall. Variegated foliage with cream edges. Long flowering. Frilled blue bracts.

**Euphorbia 'Ascot Rainbow'** Zone 7. Variegated sage green, gold & lime foliage. Very heat & drought tolerant.

Lime flowers. A 'must have'.

**Gaillardia 'Gallow Yellow'** Zone 4. 12" tall. Pure yellow with hint of gold. Repeat flowering all summer.

**Geum** Zone 5:

• **'Eos'** Golden foliage with orange flowers. Sells on sight!

• **'Totally Tangerine'**. 18" tall. Warm yellow sterile flowers. Blooms all summer.

• **'Mango Lassi'** 16" tall. Large double flowers. Shades of soft orange, apricot & mango. Evergreen.

**Helleborus** Zone 4, 15" tall:

• **'New H. niger 'Gold Collection'** No fuss, reliable addition to modern gardens. Early flowering.

• **'Jacob'** Glossy foliage with pure white flowers

• **'Josef Lemper'** Very large white flowers

• **'Cinnamon Snow'** Beautiful white flower with cinnamon specks

• **'Silver Moon'** Creamy white flowers tinged with pink over silvery foliage

**Hemerocallis** Zone 3:

• **'Custard Candy'** Soft custard coloured blooms with bronze centers. Repeat blooms - over 500 blooms in 3 years!

• **'Big Smile'** 7" tall. Fragrant yellow with ruffled pink edge.

• **'Green Mystique'** Fragrant ruffled green/yellow blooms

**Heuchera** Zone 4:

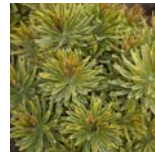
• **'Electra'** Shocking blood red veins on electrifying golden leaves

• **'Electric Lime'** Brilliant chartreuse. Red veins appear in winter.

**Heucherella** Zone 4:

• **'Golden Zebra'** Bright yellow flowers. Fabulous leaves marked with dark red.

• **'Sweet Tea'** Cinnamon coloured stars surrounded with orange tea coloured borders



*Euphorbia 'Ascot Rainbow'*  
Photo: gardencrossings.com



*Geum 'Mango Lassi'*  
Photo: finegardening.com



*Heuchera 'Sweet Tea'*  
Photo: terranovanurseries.com

**Hosta** Zone 4:

• **'Enterprise'** 16" tall. Huge white centers with shades of green to the edges.

• **'Winter Snow'** 20" tall. Shiny green leaves with very nice snowy white shading to border.

• **'Jurassic Park'** 14" tall. Huge green puckered leaves with heavy substance. Fragrant lavender flowers.

• **'First Frost'** 12" tall. Blue leaves with cream to white edging. Very attractive.

**Leucanthemum:**

• **'Sante'** Zone 4. 26" tall. Double pure white ruffled blooms. Very strong.

• **'Ice Star'** Zone 4. 18" tall. Pure white double flowers. Compact & bushy. Like the old 'Ester Reed' daisy.

• **'Paladin'** Zone 5. 16" tall. Unique ruffled & layered flowers that repeat bloom for months.

**Oenothera fremontii 'Shimmer'** Zone 4. 10" tall. Flowers all summer with soft yellow paper-like blooms that shimmer in the sun. Drought tolerant.

**Sedum:**

• **'Chocolate Drop'** 15" tall. Small mounds of lightly scalloped dark chocolate leaves. Matching pink blooms.

• **'Autumn Charm'** 15" tall. Dramatic variegations of white & green that open to rosy red flowers.

**Tiarella** Zone 5:

• **'Happy Trails'** First trailing tiarella. Ideal for hanging baskets, planters & ground covers. Beautiful markings on leaves.

• **'Cascade Creepers'** Bold, well marked foliage with wonderful trailing habit.

**Veronica:**

• **'Christy'** Zone 5. 12" tall. Low ground cover (6") with a neat habit. Blooms with blue flowers in April/May.

• **'First Love'** Zone 4. 12" tall. Early flowering. Short & well branched with hot pink flowers.

• **'Red Fox'** Zone 5. 15" tall. Free flowering June-August with striking rosy red blooms.

## Terrific Trees & Shrubs

**Albizia 'Summer Chocolate'** Zone 6. Outstanding chocolate foliage with pink flowers. Wow!

**Encore Azalea 'Autumn Series'** 3'-4' HxW. Blooms in spring, then again in summer & fall for continuous blooms.

Our varieties will be zone 6B hardiness.

**Berberis 'Golden Ruby'** Zone 4. 2-3' HxW. Deep maroon with golden ring around the edge.



*Sedum 'Chocolate Drop'*  
Photo: terranovanurseries.com



*Tiarella 'Happy Trails'*  
Photo: terranovanurseries.com



*Albizia 'Summer Chocolate'*  
Photo: vizinoveny.com

**Buddleia:**

• **'Evil Ways'** Zone 5. 5' tall. Unique golden foliage & purplish flowers.

• **'Miss Ruby'** Zone 4. 4-5' tall. Rich pink blooms. Silver grey leaves. Fragrant.

**Buxus 'Golden Dream'** Zone 5.

Amazing gold and green variegated miniature boxwood. Ideal for bedding or containers.

**Cercis 'Hearts of Gold'** Zone 5. Heart shaped leaves of deep yellow.

**Chamaecyparis nootkatensis Stricta** 12' x 20" HxW at maturity. A living beanstalk!

**Cornus kousa** Zone 5:

• **'Tri Splendor'** 10' x 5' HxW. Fabulous white, yellow & green foliage. Cream blossoms. Very clean.

• **'Samaritan'** Stunning variegated white & green clean foliage with cream blooms. Great fall colour.

**Daphne:**

• **'Lawrence Crocker'** Zone 6. New perfumed, low growing variety. Better than D. cneorum. Pink flowers.

• **'Eternal Fragrance'** Zone 6. 2½' HxW. Pink buds open to pure white perfumed flowers that bloom in spring, summer & fall.

**Diervilla 'Cool Splash'** Zone 4. 3' HxW. New variety. White & green variegated foliage. Tiny white flowers in June. Woodland plant.

**Gardenia 'Crown Jewel'** Zone 5. 3' HxW. Unbelievable hardy variety with compact habit & fabulous numbers of highly perfumed gardenia flowers. Available 2011.

**Hibiscus** Zone 5:

• **'Sugar Tip'** 5' HxW. First variegated foliage (white & green) to bloom with beautiful clear pink double flowers.

• **'Little Kim'** 4' HxW. First dwarf Rose of Sharon. Originating from South Korea. Masses of tiny white flowers with red eyes.

**Hydrangea:**

• **'Incrediball'** Zone 3. 4½' HxW. Improved 'Annabelle' with huge white flowers. Strong stems.

• **'Invincibelle Spirit'** Zone 3. Pink form of 'Annabelle'. Smaller blooms continually produce until frost. Fundraiser for breast cancer.

• **'Penny Mac'** Zone 5. 3' HxW. Small accent hydrangea that sets bud on new growth. Blue.

• **'Color Fantasy'** Zone 5. 3' HxW. Dwarf form with red flowers & shiny green-black foliage. Total winner!

• **'Mystical Emerald'** Zone 5. 3' x 4' HxW. Shade. Soft pink blooms fade to lush emerald green. Wow!

• **'Lemon Daddy'** Zone 5. 4' HxW. Brilliant yellow foliage.



*Cercis 'Hearts of Gold'*  
Photo: gardening.about.com



*Gardenia 'Crown Jewel'*  
Photo: dabney-rose.com



*Hydrangea 'Invincibelle Spirit'*  
Photo: pwcertified.com

Most yellow type yet.

**Hypericum 'Mystical Beauty Series'** Zone 5. 3' HxW. Massive flowers turn to stunning berries that last well into winter. Pink, black, red & orange. Stunning!

**Leucothoe 'Curly Red'** Zone 6. 2' HxW. Unique curly red foliage on new growth & wonderful winter red colour.

**Physocarpus 'Centre Glow'** Zone 3. Unique bronze foliage with light glow in centre of foliage for very unique effect.

**Syringa 'Bloomerang'™ Proven Winners** Zone 3. 5' HxW. Revolutionary new lilac that blooms in May & reblooms in profusion in summer. Highly perfumed.



*Syringa 'Bloomerang'*  
Photo: provenwinners.com

**Pennisetum setaceum 'Fireworks'** Zone 9. 24". Stunning red & pink foliage with bunny tail plumes. Hottie for 2010.

## Amazing Annuals

**Ageranthemum 'Perfect Pink'** A 'wow' ruffled center of short pink petals on a beautifully formed round plant

**Alyssum 'Snow Princess'** (Lobularia) Vigorous. First basket alyssum. Heat tolerant. Sweet scented blooms all summer. Run away winner for 2010.

**Begonia 'Bonfire Scarlet'** Brilliant scarlet vegetative begonia. No mildew. Massive flowering. Tolerates sun. We love it!

**Calibrachoa:**

• **'Mini Famous Double Yellow'** Great vigour & form for baskets

• **'Confetti Blend'** Amazing colour blends from Dumen. Will come blended.

**Euphorbia 'Breathless Blush'** New bronze foliage variety that blends nicely with white flowers. A nice addition to

'Silver Fog' & 'Diamond Frost'.

**Gomphrena:**

• **'Fireworks'** 4' tall. Open architectural plants like Verbena bonariensis. Heat & drought tolerant.

• **'Las Vegas'** 16" tall. Nice blend of pink, purple & white. Great late summer & fall show.

**Leonotis 'Savannah Sunset'** Furry orange flower in round clustered balls. Creates a unique tiered effect.

**Millet 'Jade Princess'** Total winner. Huge bulrush-like flower heads with chartreuse foliage.

**Petunia:**

• **'Pretty Much Picasso'™ Proven Winners** Violet flowers with chartreuse edge. Take petunias over the edge.

• **'Sophistica Antique Shades'** Soft cream with magenta edging (the new look).

• **'Sophistica Lime Bicolor'** Hot lime with magenta flecking. Wow!

• **'Hocus Pocus'** First true black petunia – really black!

• **'Rudbeckia 'Denver Daisy'** Much talked about. Giant flowers all summer. Deep gold with bronze touches.

**Vinca (Catharanthus roseus) 'Cora Cascade'** First vigorous trailing annual vinca in 5 colours for hot sun. Move over impatiens!

## Fresh Vegetables

**Carrots:**

• **'Sweet Baby Jane'** Very sweet baby type. Harvest at 3".

• **'Sherbert'** Novelty. Light orange. Culinary delight.



*Begonia 'Bonfire'*  
Photo: ubcbotanicalgarden.org



*Petunia 'Lime Bicolor'*  
Photo: panamseed.com

• **'Crème de Lite'** Novelty. Pale yellow.

• **'Purple Haze'** Novelty. Purple.

**Peppers:** Hot is where it's at. **'Hottie'**, **'Habanero'** & **'Caribbean Red Hot'** are at the top of the Scofield scale.

**Tomatoes:** Many new varieties again this year, but the most innovative is **'Tomaccio'**. It can be dried or microwaved to easily produce sundried fruit. Really!

**Potatoes:**

• **'Nicola'** An attractive yellow potato said to be highest in antioxidants.

• **'Stampede'** Lower in starch & sugar. Ideal for diabetics.



*Tomato 'Tomaccio'*  
Photo: File

## Vegetable Varieties for Patios & Containers

Here's a list of the most successful varieties (Courtesy of Ball Horticulture):

**Cucumber**

• Bush Crop

• Bush Pickle

• Fanfare

• Salad Bush

**Eggplant**

• Fairy Tale

• New Gretel

• Hansel

**Lettuce**

• Bistro Salad

• Blend

• Mesclun Blend

• Red Salad Bowl

**Okra**

• Cajun Delight

**Pea**

• Patio Wonder

**Pepper**

• Banana

• Supreme

• Better Belle

• Blushing Beauty

• Cherry Bomb

• New Hottie

• Italian Roaster

• Mucho Nacho

• Pimento Elite

• Purple Beauty

• Red Beauty

• Redskin

**Squash**

• Honey Bear

**Strawberry**

Any everbearing or day neutral variety

**Swiss Chard**

• Bright Lights

**Tomatoes**

• Bush Early Girl

• Health Kick

• Heartland

• New Patio

• Tumbler

• Tumbling

• Tomato Red

• Window Box

Roma

## Remember Those in Need this Season

Our vegetable gardens often produce more than we can ever consume in one season, so this year, why not help others with your bounty?

Contact your local Salvation Army Food Bank to ensure they are able to accept fresh fruit and veggies and, if they can, take any extra food you grow to them as part of this fantastic program.

For details, visit:  
[www.growarow.org](http://www.growarow.org)



10015 Young Rd.  
Chilliwack  
Ph: 604.792.6612  
[mintergardens.com](http://mintergardens.com)

## Brian Minter's Picks Exciting New Plants for 2010

© Minter Country Garden Ltd. 2010

## Award Winners

**2010 Herb of the Year: Dill**

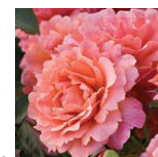
Both dwarf & tall varieties. As a flower, fragrance or pickle pick-me-up, it's a winner! Great fresh with fish and in dips, and try making your own vinegars and oils with it too.



*Dill*  
Photo: greathomemedies.com

**2010 AARS Rose Winner:**

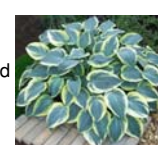
**'Easy Does It'** (floribunda). Harkness introduction. Has enormous clusters of peach-pink & honey-yellow blooms that cover the plant all season.



*'Easy Does It'*  
Photo: rose.org

**2010 Hosta of the Year: 'First Frost'**

Nice blue center, shading out to cream & white. Handsome.

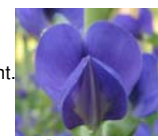


*'First Frost'*  
Photo: gilberthwild.com

**2010 Perennial of the Year: Baptisia australis** Zone 3. North American wild-flower with blue pea-like flowers followed by large seed pods. Drought tolerant.

**AAS Annual Winners of the Year:**

**Snapdragon 'Twinny Peach'** 12"x8". First compact double snapdragon. Peach/yellow/orange.



*Baptisia australis*  
Photo: wikimedia.org

**Gaillardia 'Mesa Yellow'** 16"x20". Continuous 3" flowers. Weather resistant.

**Viola 'Endurio'** 6"x10". Low, fast growing, long blooming. Clear blue flowers.



*Gaillardia 'Mesa Yellow'*  
Photo: panamseed.com

**Zinnia 'Zahara Starlight Rose'** 12"x14" spread. First rose & white bicolor. Disease, heat & drought tolerant.

**Keep up with the latest gardening tips and trends!**  
Find us on **Facebook** under **'Minter Gardening'** & join our email list to receive our monthly gardening newsletter. To join, email us at [minterclub@mintergardens.com](mailto:minterclub@mintergardens.com) with 'Add Me' in the Subject Line.

